

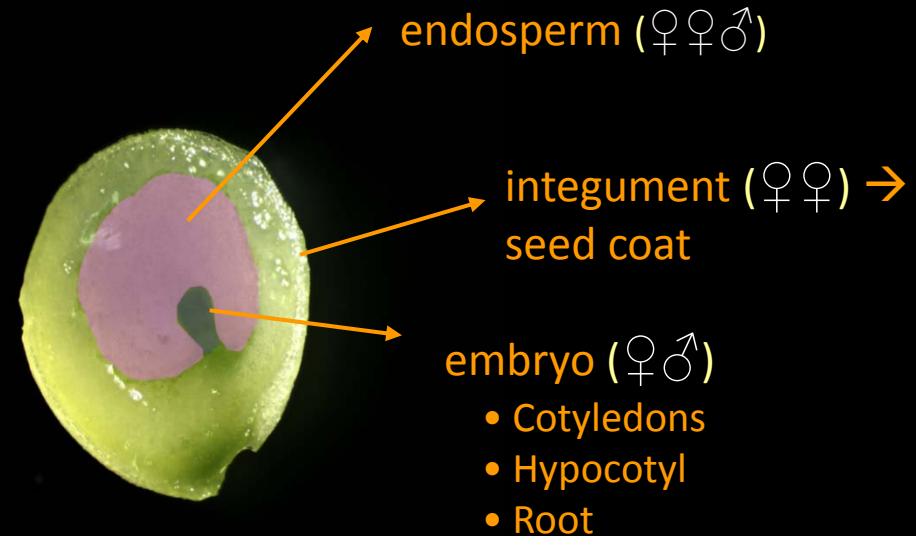
Manipulating seed size in *Brassica*



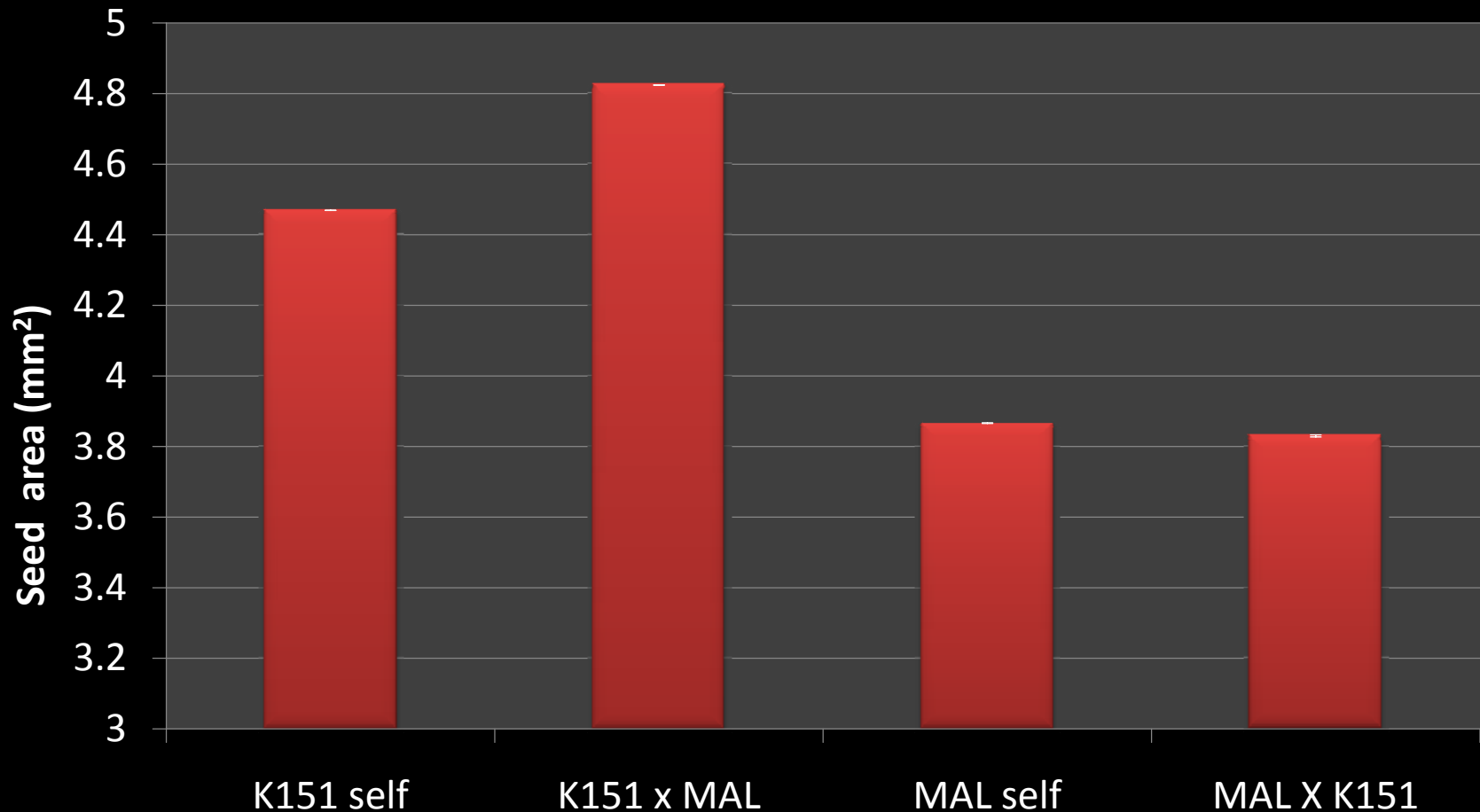
Factors affecting seed size in *Arabidopsis*

- Endosperm proliferation

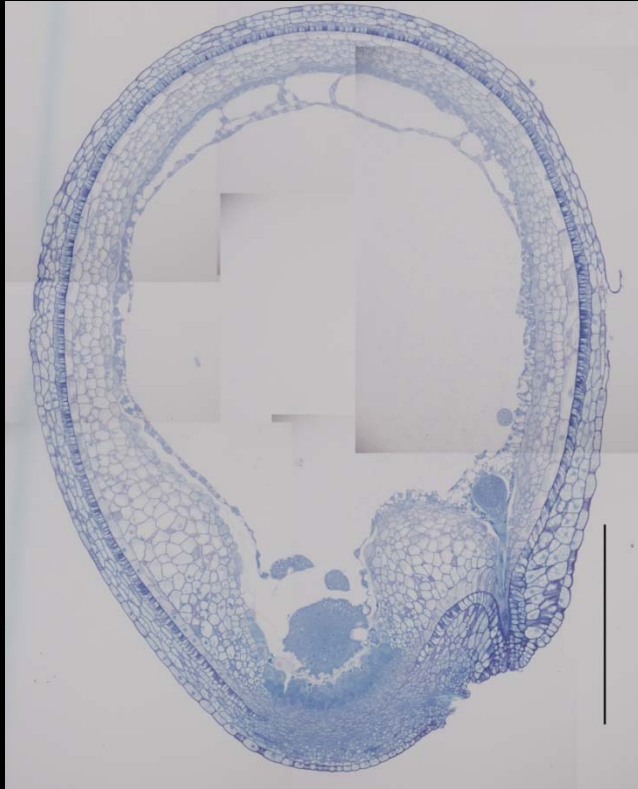
- Integument growth



Monosomic Addition Lines



Paternal excess



200 μm

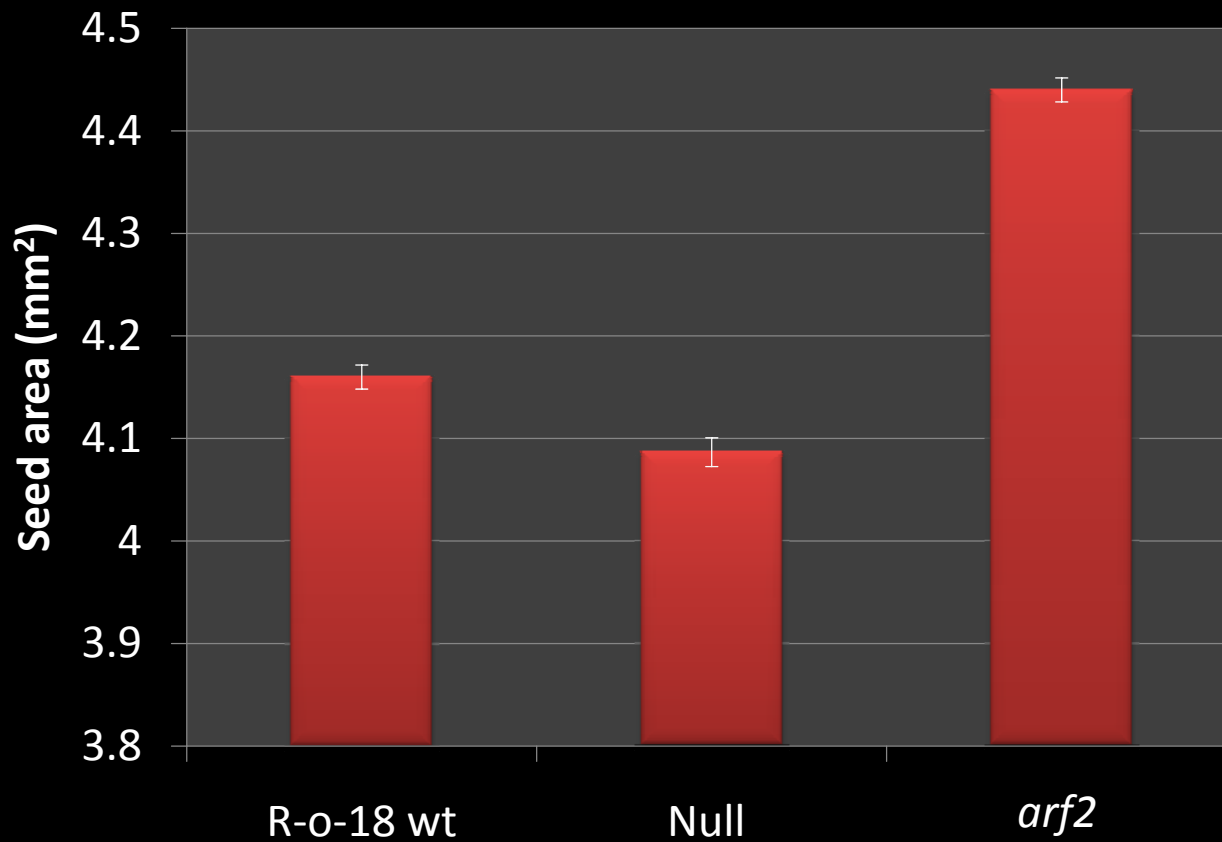
K151 self 10 DAP



200 μm

K151 x MAL 10 DAP

ARF2 – TILLING



REVGEN UK
BRAC

Thank you

Smita Kurup
Andrew Stoute

Rod Scott
Valentyna Varenko

