

# *Brassica Genomic and Genetic Resources*

Dr. Graham Teakle



THE UNIVERSITY OF  
WARWICK



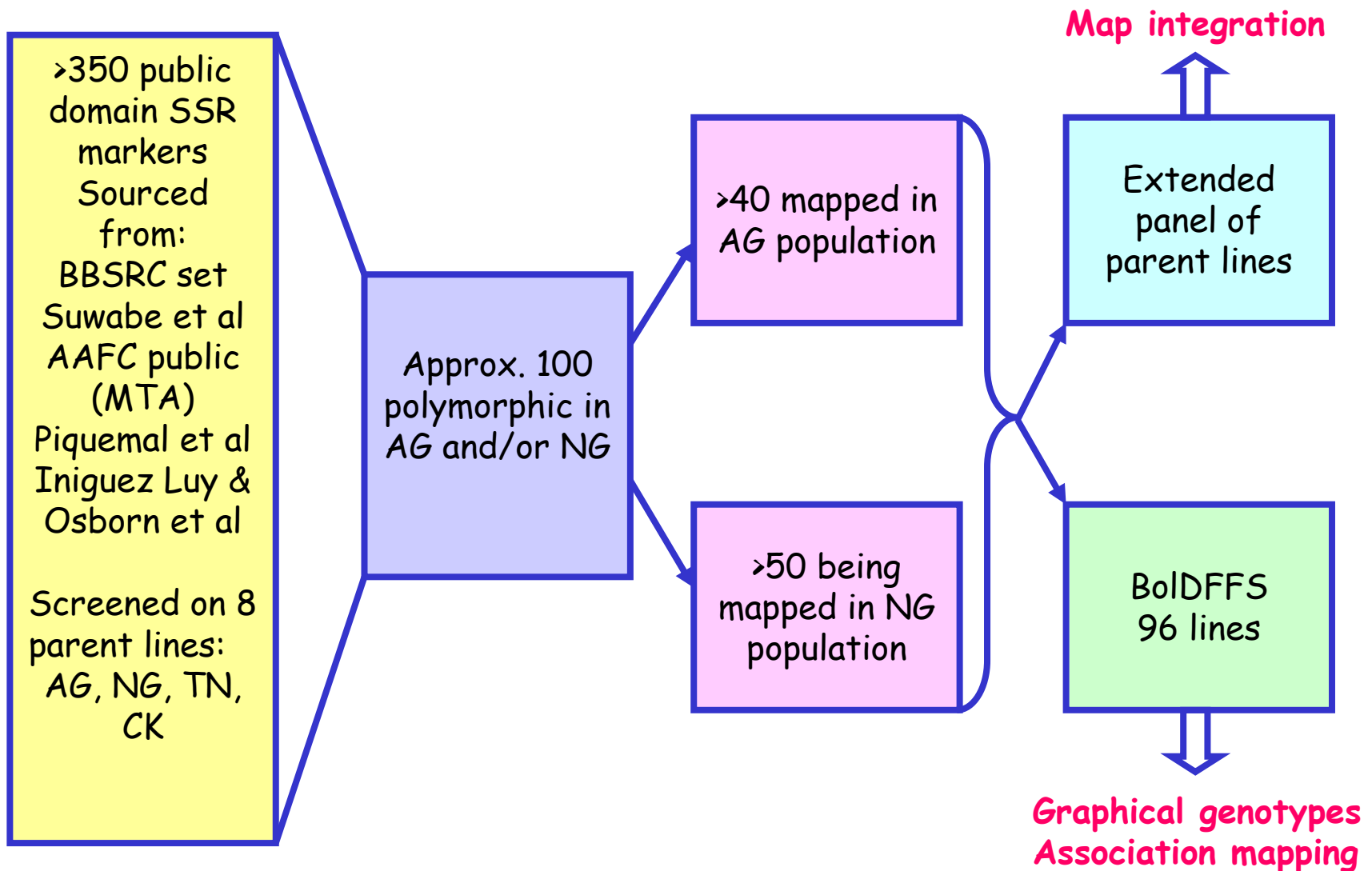
# Genetic resources - natural variation

	Population name	Type	Mapping status
<b>Vegetable Brassicas</b>	HRIGRU	Genebank collection	Not yet undertaken
<b><i>B. oleracea</i></b>	AGDH	Mapping pop	Published, updated
	NGDH	Mapping pop	Published, updated
	MGDH	Mapping pop	Unpublished
	TODH	Mapping pop	Unpublished
	AGSL	Substitution lines	Published
	<b>BoIDFFS</b>	Diversity set	Under construction
<b>C genome wild species</b>	<b>BCgDFFS</b>	Diversity set	Under construction
<b><i>B. napus</i></b>	TNDH	Mapping pop	In press
	DYDH	Mapping pop	Published
	TVSL	Substitution lines	In preparation
	<b>BnaDFFS</b>	Diversity set	Under construction
	<b><i>B. rapa</i></b>	CKDH	Mapping pop
	BRF2	Mapping pop	Published



DNA & Seed of selected populations available - MTA, cost of replacement fee

# Markers for integrated genotyping

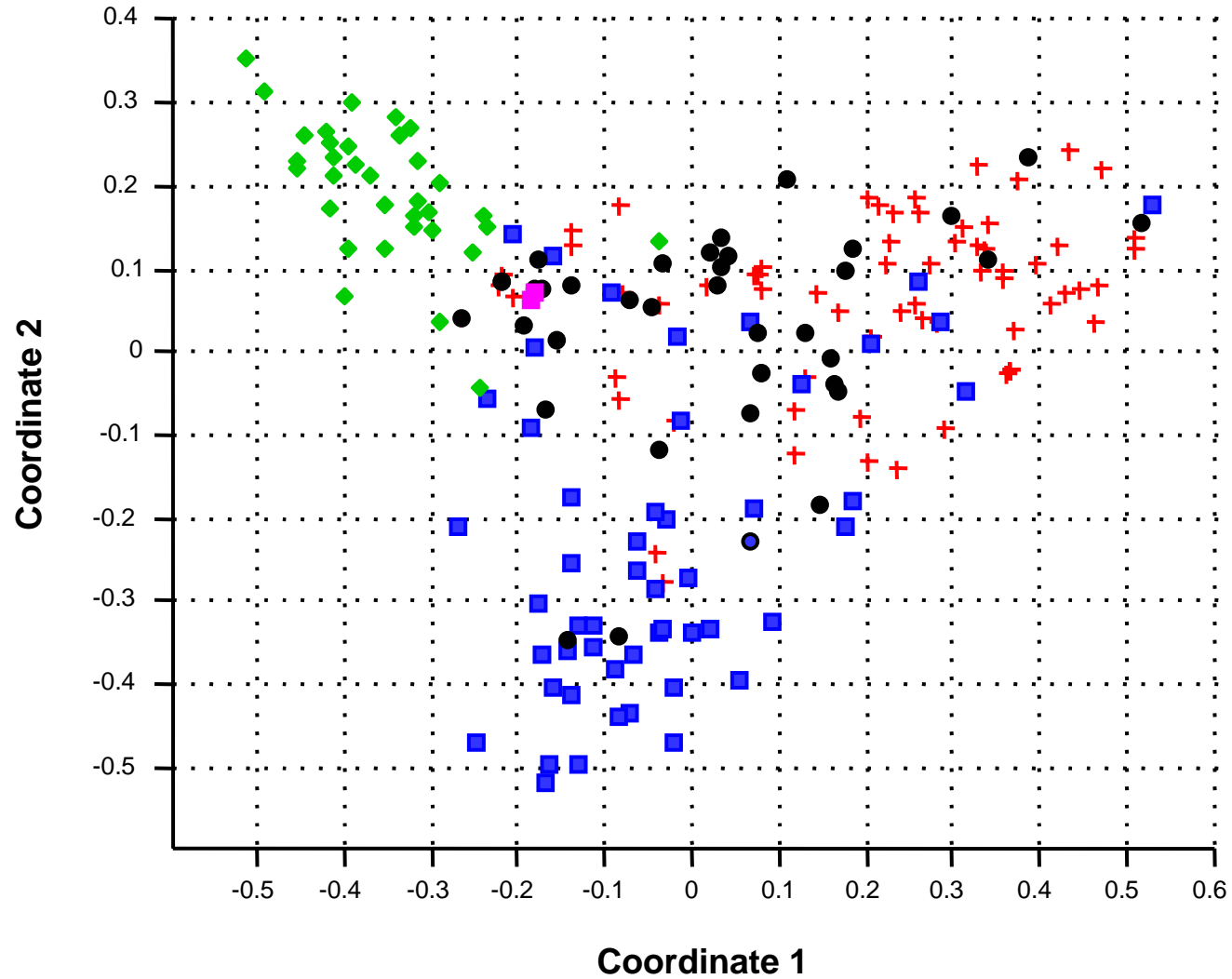


# Parent line screening

Parent lines	Species	Population	Comments
Major DH	Bna	MSDH	Osborn
Stellar DH	Bna	MSDH	Osborn
Tapidor DH	Bna	TNDH	Jinling meng
Ningyou 7	Bna	TNDH	Jinling meng
Samourai	Bna	DSDH	Delourme
Drakkar	Bna	SDDH	Delourme
Darmour	Bna	DSDH	Delourme
Yudal	Bna	DYDH	Delourme
Stellar	Bna	SDDH	Delourme
Darmour bzh	Bna	DYDH	Delourme
Victor	Bna	TVSL	
CA25	Bol	NGDH, NBDH	
GDDH33	Bol	AGDH, MGDH	
A12DHd	Bol	AGDH	
BI87053	Bol	NBDH	
AC498	Bol	NGDH	
Mar 34	Bol	MGDH	
Bohmerwaldkohl	Bol	HBDH	
HB1280	Bol	MHBDH	
Mar 12a	Bol	MHBDH	

Parent lines	Species	Population	Comments
Hawke	Bol	HBDH	
DHSL150 (C04099)	Bol		Pink C-DFS RC parent
TO1000DH3	Bol		Bol shotgun sequence
TO1434	Bol		Osborne lines
TO1485 (broccoli BIO-141-DH)	Bol		Quiros mapping patent
Brocc "Early Big" (TO1486, BIO-141-DH)	Bol		
Chiifu 401-42	Bra	CKDH	
Kenshin 402-43	Bra	CKDH	
R-o-18	Bra	BRF2	
B162	Bra	BRF2	
IMB218DH1 (RC)	Bra		Inguez Luy/Osborn
TO980 (cv R500)	Bra		Inguez Luy/Osborn
IBM211 (FIL501)	Bra		Inguez Luy/Osborn
Mizuna line P19	Bra		Guusje Bonnema/Ping Lou parent line
Vegetable turnip line P115	Bra		Guusje Bonnema/Ping Lou parent line
Yellow Sarson line P143	Bra		Guusje Bonnema/Ping Lou parent line
Pak Choi line P144	Bra		Guusje Bonnema/Ping Lou parent line
Rapid cycling line P156	Bra		Guusje Bonnema/Ping Lou parent line
Chinese cabbage line P175	Bra		Guusje Bonnema/Ping Lou parent line

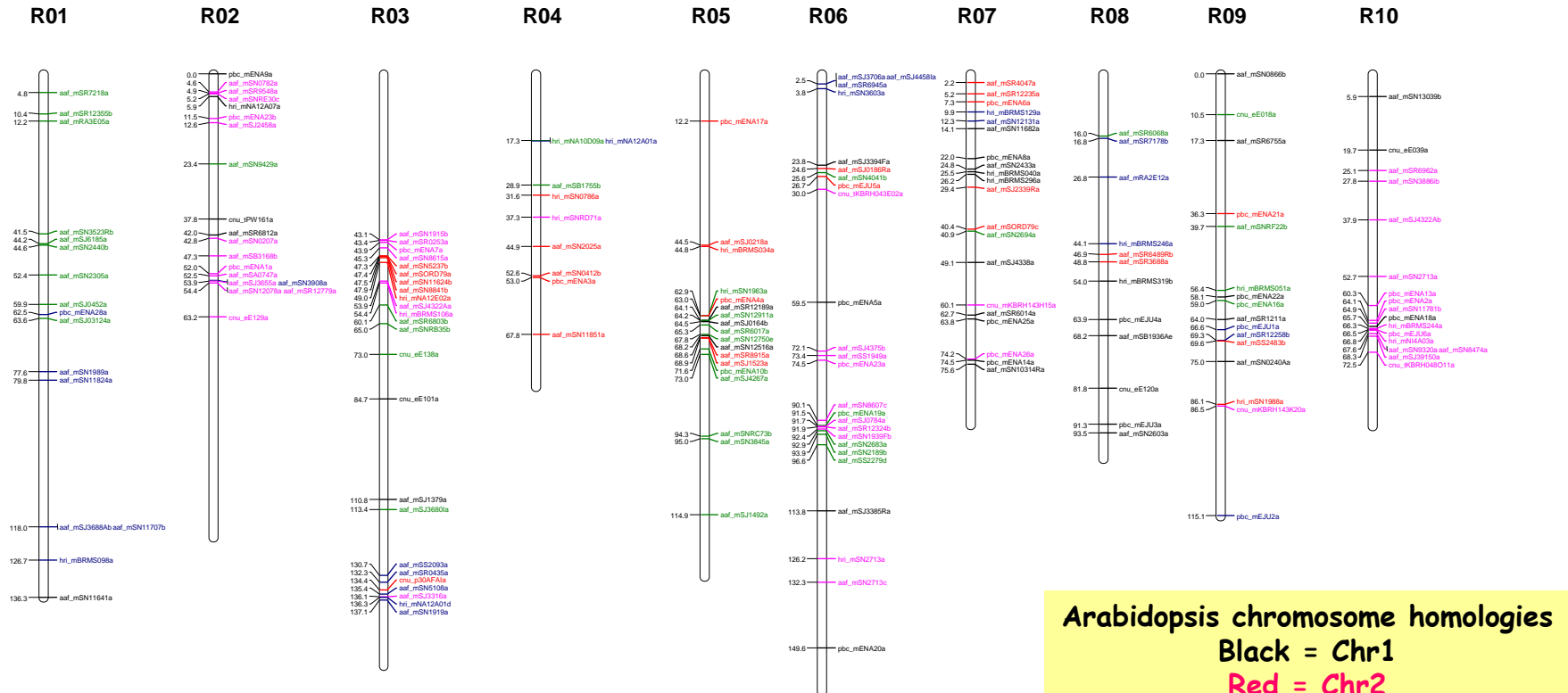
# PCO analysis of 188 BnaDFS lines with 15 SSRs



# CKDH Chinese cabbage linkage map

556 loci

Reference map for *B. rapa* sequencing project



**Arabidopsis chromosome homologies**  
**Black = Chr1**  
**Red = Chr2**  
**Green = Chr3**  
**Blue = Chr4**  
**Pink = Chr5**

UK - Teakle, Barker, King et al (WHRI, RRES)  
 Canada - Beynon, Lydiate, Sharpe et al (AAFC)  
 Korea - Choi, Lim et al (CNU)  
 Australia - Edwards, Batley et al (PBC)